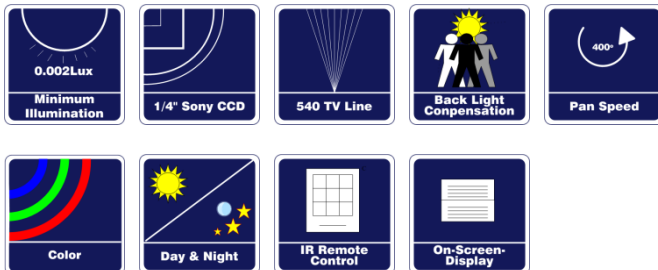


EL-PT530B

Smart Compact Integrated Dome Camera



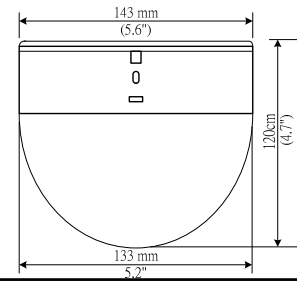
- 5.6" Compact Designed Color Dome Camera
- 375° Pan Rotation
- Continuous Auto Focus
- Variable Speed 1° ~ 400°
- Auto Turn Around
- 128 Presets
- Build-in Mechanical IR Cut Filter
- Home Position
- Pan/Tilt Speed Proportional to Zoom Ratio
- 23X Optical Zoom, 10x Digital Zoom
- Build in MOLPF for the real day/night function
- Minimum illumination: 0.002 Lux
 - Advanced DSP Camera
 - Auto White Balance
 - Backlight Compensation
 - Auto Iris Control
 - Electronic Shutter
- Remote Control via RS-485 and IR Remote Controller
- On Screen Display for Camera Control
- Rein-forced Dome Cover Resist up to 10 kg Out Force
- Build-in up to 9 Groups of Protocol
- Up to 5 Groups and 128 Preset Points
- Twist Lock Release from Base for Easy Installation and Servicing
- Optional Wall Mount Bracket and Outdoor Housing Available

Specifications

Model	NTSC	EL-PT530BN
	PAL	EL-PT530B-EP
Pick-UP Device	1/4" SONY EXVIEW CCD	
Sync System	Internal synchronous	
Resolution	540TVL	
Effective Pixels	NTSC	410K Pixel
	PAL	470K Pixel
Sensitivity	0.1 Lux (Color) 0.02 Lux (B/W) 0.002 Lux (SU) 0 Lux (IR illumination)	
Lens	23x zoom lens / f 3.6~82.8mm / F 1.6~3.8	
S/N Ratio	50dB (AGC OFF)	
IR-Cut Filter	Mechanical IR Cut Filter Auto / Manual	
Iris lens	Auto / Manual	
Focus	Auto / Manual	
Electronic shutter	NTSC:1/60 ~ 1/100,000 Sec. / PAL:1/50 ~ 1/100,000 Sec.	
Video output	1.0 Vp-p, 75Ω	
Gamma Correction	0.45 / 1	
Gain Control	Super AGC 0~36dB	
White Balance	ATW 2500 \pm ~9500 \pm K / PTL Preset / Manual	
BLC	Super BLC / 48 zone BLC	
OSD Function	OSD Menu	
Rotation mode	Auto Pan feature / Preset Position Patrol	
Rotation angle	Horizontal Pan 0°~375° / Vertical Tilt 0°~90°	
Rotation speed	Horizontal Pan 100°/sec / Vertical Tilt 100° /sec	
Speed setting	Auto: Approx.2.5~60°/ Sec(Variable) / Manual: Approx. 2.5~160°/ Sec(Variable) / Preset: Max. 320°/ Sec	
Stop times	2 ~ 255 Sec (Variable)	
DI	4 inputs	
DO	1output	
Preset	128 Points	
Control	Infrared Remote Control + RS-485 Control	
Max link	999 Cameras	
Preset precision	+/- 1 Deg	
Power supply	DC13V / 1.5A	
Ambient Operation	Temperature: 0°C ~ 50°C Less Than 30%~90% RH	
Installation location	Indoor Ceiling mounted (EL-PT-B15) / Wall mounted with Bracket(EL-PT-B16)	
Material	Cover: Rugged dome / Base: ABS fireproof Fiberglass	
Color	Cover: gray / Base: Black	
Dimensions	>143 x H120mm (>5.6"x H4.7")	
Weight	0.86Kg	
Approval	CE, FCC	

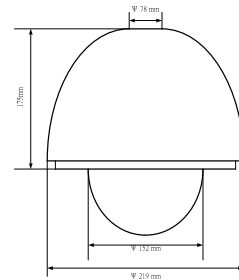
Surface Mount (Indoor)

- Build-in color dome system
- Quick and easy installation on any type of ceiling
- Injection molded plastic dome body
- 5.6" acrylic tinted dome cover
- Dome cover could resist 10kg outer force

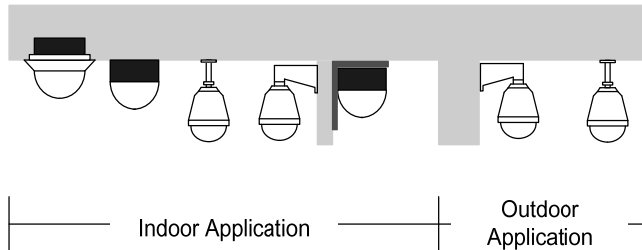


Environmental Pendant mount (Indoor/outdoor)

- Easy Installation
- Built in Fan / heater (optional)
- Optical Clear Dome Cover
- Different Pendant Available
- Environmentally Sealed and Weatherized
- Sun Shield



Dome Installation



Housing Pendant



Gooseneck Pendant

- Material: Steel



Straight Tube Pendant

- Material: Steel,

EL-PT800

Control Key Board



- Multi-function control key board: PTZ dome camera, matrix
- Support 2400, 4800 and 9600 baud rate
- 20 x 4 back light functions LCD to support use friendly interface
- Joystick control speed dome direction and speed
- Password protection
- Preset point edit function
- RS-232 port to download update software

Model Selection

EL-PT530B-EP:
EL-PT530B-EN:
EL-PT530B-E2P:
EL-PT530B-E2N:

PAL, Indoor
NTSC, Indoor
PAL, Outdoor
NTSC, Outdoor