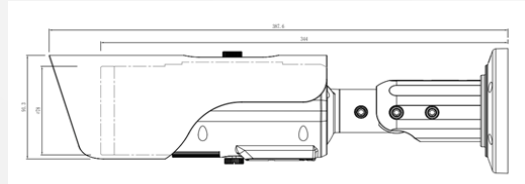
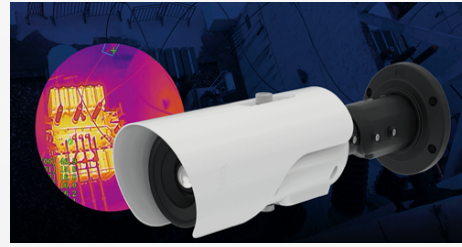


AT-TBS4

Thermal Bullet camera

Feature

- Uncooled Microbolometer sensor with 400(H)x300(V)
- On-board temp-detection algorithm
- NETD Sensitivity $\leq 40\text{mK}$
- 8 mm motorized lens(15/25/35/50mm optional)
- Support 3 temperature measurement rule types (Spot, Line, Area)
- 17 color control
- DVE image enhance
- Reliable temperature abnormally alarm
- Anti-frozen, IP66



Thermal Lens	Thermal Sensor	Uncooled IRFPA Microbolometer
	Effective Pixel	400(H) X 300(V)
	Pixel size	17 μm
	NETD	40mK@F1.0,300K
	Detection Range Fires 1x1m (a) Humans 1.8x0.5m (b) Vehicles 4x1.5m (c)	8mm: 235(a)/235(b)/722(c)m 15mm: 441(a)/441(b)/1353(c)m 25mm: 735(a)/735(b)/2255(c)m 35mm: 1029(a)/1029(b)/3137(c)m 50mm: 1471(a)/1471(b)/4510(c)m
	Focal Length	8mm(15/25/35/50mm Optional)
	View Angle	8mm H46° xV35°, 15mm H25° xV19°, 25mm H15° xV11°, 35mm H11° xV8°, 50mm H7° xV5°
	F Number	F1.0
Temperature Measurement	Temperature Detection	3 temperature measurement rule types (20 spots, 2 lines, 16 area)
	Temperature Alarm	Over temperature alarm, Temperature difference alarm
	Accuracy	$\pm 2^\circ\text{C} \pm 2\%$
	Response Time	<30ms
	Temp. measurement range	-40° C~150° C
Video & Audio	Frame Rate	Mainstream: Thermal: D1 @25/30fps ; Sub Stream: Thermal: CIF @25/30fps
	Bit Rate	Thermal: 100Kbps~6Mbps;sub stream: 100Kbps~6Kbps
	Intelligent video	Perimeter, Single Virtual Fences, Double Virtual Fences, Object Left, Object Removed
	DVE Image Enhance	Support
	Audio	1 audio
Network	Network protocol	IPv4/IPv6、HTTP、HTTPS、RTSP/RTP/RTCP、TCP/UDP、DHCP、DNS、PPPOE、SMTP、SIP、802.1x、DDNS、PPPoE、FTP、SNMP、QOS
	Max on-line users	Max. 10
	Interoperability	Onvif, CGI, SDK
	Browsers	Linux C /windows/ C&C++、Android, IOS
	IP filter	Support
	Streaming Method	Unicast
Interface	Ethernet	RJ45 10/ 100
	Alarm	2 alarm input / 2 alarm output
	RS485	Support
	BNC output	Support
	SD slot	Micro SD (Max support up to 128GB)
	Reset Button	Support
General	Power	DC12V
	Power consumption	< 5W
	Working Temperature	-30° C~55° C , Humidity 0~ 90% RH
	Storage	0 ~ 90% RH
	Certificate	CE/FCC
	Ingress Protection	IP66
	Dimensions	$\phi 110 \times 388\text{mm}$
Net Weight	1900g	